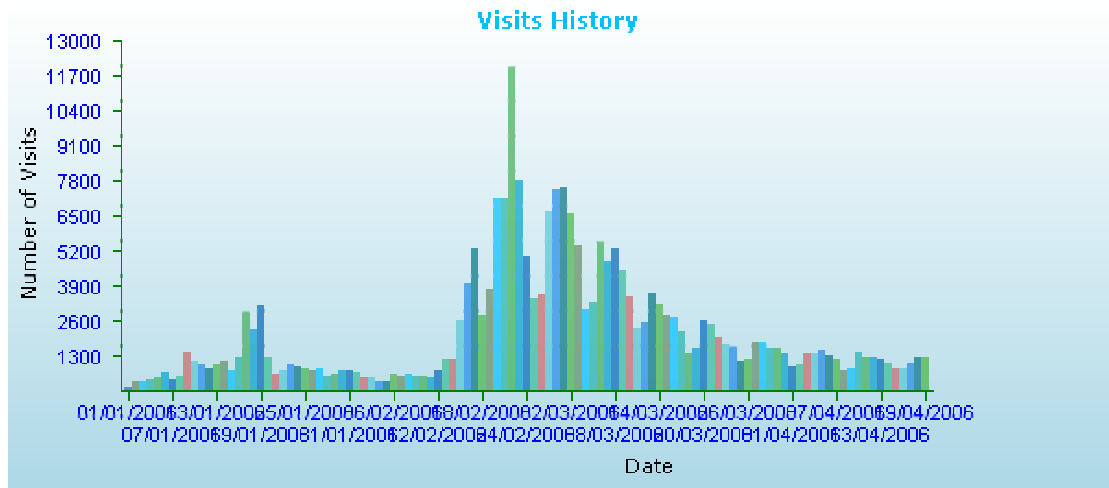




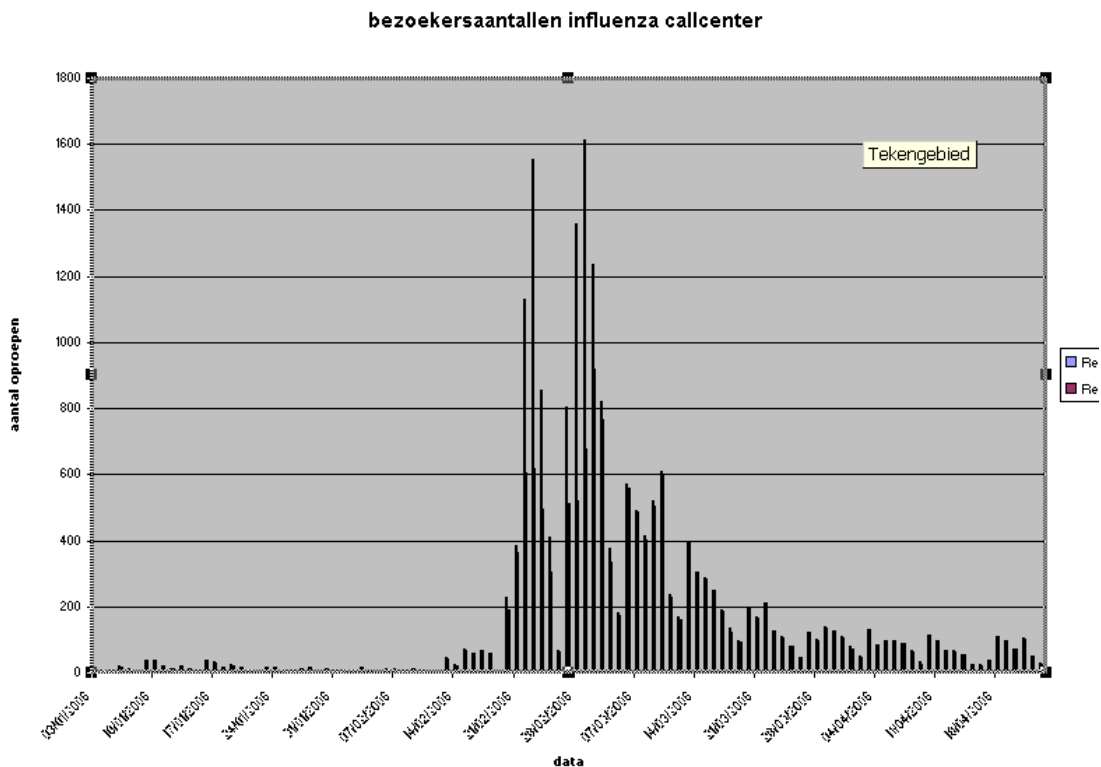
Cijfermateriaal: [www.influenza.be](http://www.influenza.be) en

callcenter 0800 99 777

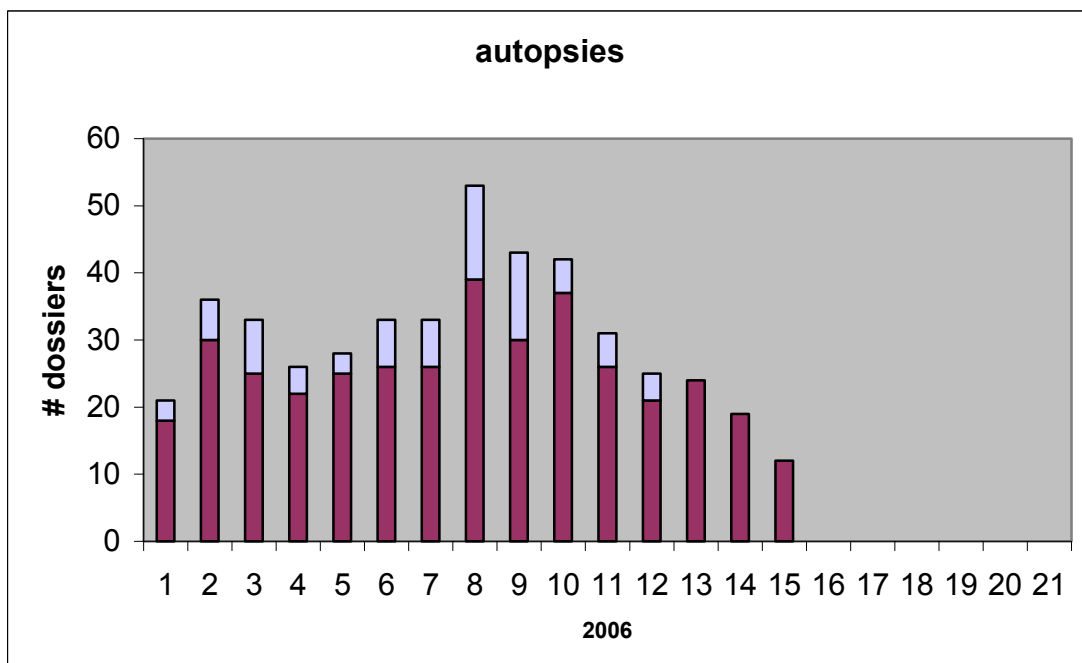
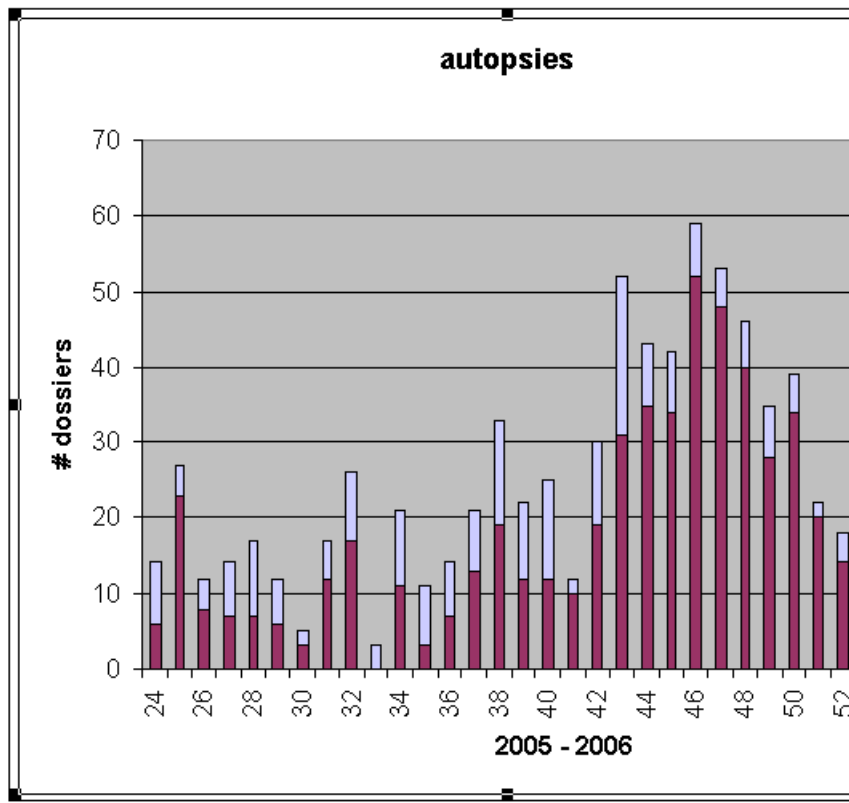
**Grafiek: Bezoekersaantallen [www.influenza.be](http://www.influenza.be) (van 01/01/2006 tot en met 19/04/2006)**



**Grafiek: Bezoekersaantallen website (van 01/01/2006 tot en met 23/04/2006)**



**Grafiek: aantal autopsies**



**cijfers: Bezoekersaantallen [www.influenza.be](http://www.influenza.be) (van 01/01/2006 tot en met 19/04/2006)**

**data**

**bezoekers**

01/01/2006	163
02/01/2006	381
03/01/2006	395
04/01/2006	456
05/01/2006	539
06/01/2006	693
07/01/2006	417
08/01/2006	578
09/01/2006	1.501
10/01/2006	1.106
11/01/2006	977
12/01/2006	868
13/01/2006	984
14/01/2006	1.100
15/01/2006	798
16/01/2006	1.280
17/01/2006	3.006
18/01/2006	2.315
19/01/2006	3.181
20/01/2006	1.232
21/01/2006	647
22/01/2006	765
23/01/2006	1.013
24/01/2006	904
25/01/2006	874
26/01/2006	813
27/01/2006	840
28/01/2006	566
29/01/2006	662
30/01/2006	821
31/01/2006	811
01/02/2006	694
02/02/2006	532
03/02/2006	483
04/02/2006	352
05/02/2006	402
06/02/2006	630
07/02/2006	553
08/02/2006	648
09/02/2006	604
10/02/2006	610
11/02/2006	480
12/02/2006	818
13/02/2006	1.227
14/02/2006	1.230
15/02/2006	2.626
16/02/2006	3.997
17/02/2006	5.298
18/02/2006	2.853
19/02/2006	3.800

20/02/2006	7.151
21/02/2006	7.128
22/02/2006	12.055
23/02/2006	7.808
24/02/2006	5.013
25/02/2006	3.454
26/02/2006	3.599
27/02/2006	6.639
28/02/2006	7.485
01/03/2006	7.593
02/03/2006	6.616
03/03/2006	5.450
04/03/2006	3.073
05/03/2006	3.330
06/03/2006	5.543
07/03/2006	4.836
08/03/2006	5.297
09/03/2006	4.497
10/03/2006	3.530
11/03/2006	2.378
12/03/2006	2.585
13/03/2006	3.642
14/03/2006	3.283
15/03/2006	2.831
16/03/2006	2.743
17/03/2006	2.224
18/03/2006	1.373
19/03/2006	1.619
20/03/2006	2.643
21/03/2006	2.471
22/03/2006	2.047
23/03/2006	1.760
24/03/2006	1.686
25/03/2006	1.131
26/03/2006	1.225
27/03/2006	1.837
28/03/2006	1.779
29/03/2006	1.600
30/03/2006	1.600
31/03/2006	1.376
01/04/2006	909
02/04/2006	971
03/04/2006	1.425
04/04/2006	1.385
05/04/2006	1.564
06/04/2006	1.345
07/04/2006	1.170
08/04/2006	816
09/04/2006	873
10/04/2006	1.453

11/04/2006	1.286
12/04/2006	1.235
13/04/2006	1.190
14/04/2006	1.034
15/04/2006	847
16/04/2006	838
17/04/2006	1.046
18/04/2006	1.293
19/04/2006	1.287

**Bezoekersaantallen influenza callcenter (van 01/01/2006 tot en met 23/04/2006)**

<b>data</b>	<b>Offered calls</b>	<b>Answered calls</b>	<b>Accessibility</b>
03/01/2006	5	5	100,00%
04/01/2006	7	6	85,71%
05/01/2006	7	7	100,00%
06/01/2006	22	18	81,82%
07/01/2006	11	10	90,91%
09/01/2006	38	37	97,37%
10/01/2006	37	37	100,00%
11/01/2006	20	20	100,00%
12/01/2006	14	14	100,00%
13/01/2006	20	20	100,00%
14/01/2006	12	11	91,67%
15/01/2006	7	7	100,00%
16/01/2006	38	37	97,37%
17/01/2006	32	31	96,88%
18/01/2006	19	19	100,00%
19/01/2006	26	23	88,46%
20/01/2006	15	15	100,00%
21/01/2006	8	8	100,00%
23/01/2006	16	15	93,75%
24/01/2006	19	18	94,74%
25/01/2006	10	10	100,00%
26/01/2006	10	10	100,00%
27/01/2006	12	11	91,67%
28/01/2006	15	15	100,00%
30/01/2006	13	13	100,00%
31/01/2006	9	9	100,00%
01/02/2006	8	8	100,00%
02/02/2006	9	9	100,00%
03/02/2006	18	18	100,00%
04/02/2006	6	6	100,00%
06/02/2006	11	10	90,91%
07/02/2006	11	10	90,91%

08/02/2006	9	8	88,89%
09/02/2006	11	11	100,00%
10/02/2006	8	8	100,00%
11/02/2006	2	2	100,00%
13/02/2006	45	44	97,78%
14/02/2006	24	23	95,83%
15/02/2006	73	67	91,78%
16/02/2006	61	60	98,36%
17/02/2006	69	67	97,10%
18/02/2006	61	59	96,72%
20/02/2006	228	189	82,89%
21/02/2006	384	366	95,31%
22/02/2006	1129	604	53,50%
23/02/2006	1555	619	39,81%
24/02/2006	856	497	58,06%
25/02/2006	411	305	74,21%
26/02/2006	67	62	92,54%
27/02/2006	803	514	64,01%
28/02/2006	1360	523	38,46%
01/03/2006	1615	679	42,04%
02/03/2006	1238	921	74,39%
03/03/2006	822	768	93,43%
04/03/2006	378	334	88,36%
05/03/2006	182	175	96,15%
06/03/2006	573	560	97,73%
07/03/2006	493	487	98,78%
08/03/2006	415	403	97,11%
09/03/2006	520	506	97,31%
10/03/2006	608	597	98,19%
11/03/2006	238	228	95,80%
12/03/2006	169	163	96,45%
13/03/2006	399	393	98,50%
14/03/2006	307	303	98,70%
15/03/2006	286	283	98,95%
16/03/2006	250	248	99,20%
17/03/2006	192	187	97,40%
18/03/2006	135	123	91,11%
19/03/2006	97	94	96,91%
20/03/2006	198	195	98,48%
21/03/2006	169	165	97,63%
22/03/2006	213	210	98,59%
23/03/2006	127	125	98,43%
24/03/2006	110	107	97,27%
25/03/2006	79	79	100,00%
26/03/2006	48	48	100,00%

27/03/2006	123	121	98,37%
28/03/2006	103	99	96,12%
29/03/2006	139	137	98,56%
30/03/2006	127	125	98,43%
31/03/2006	112	108	96,43%
01/04/2006	81	73	90,12%
02/04/2006	50	45	90,00%
03/04/2006	133	130	97,74%
04/04/2006	84	83	98,81%
05/04/2006	99	98	98,99%
06/04/2006	99	97	97,98%
07/04/2006	90	88	97,78%
08/04/2006	66	63	95,45%
09/04/2006	32	27	84,38%
10/04/2006	116	116	100,00%
11/04/2006	99	96	96,97%
12/04/2006	68	66	97,06%
13/04/2006	68	65	95,59%
14/04/2006	54	54	100,00%
15/04/2006	27	25	92,59%
16/04/2006	24	20	83,33%
17/04/2006	39	37	94,87%
18/04/2006	109	109	100,00%
19/04/2006	97	96	98,97%
20/04/2006	73	73	100,00%
21/04/2006	106	103	97,17%
22/04/2006	51	50	98,04%
23/04/2006	29	27	93,10%
	<b>19820</b>	<b>15127</b>	<b>76,32%</b>